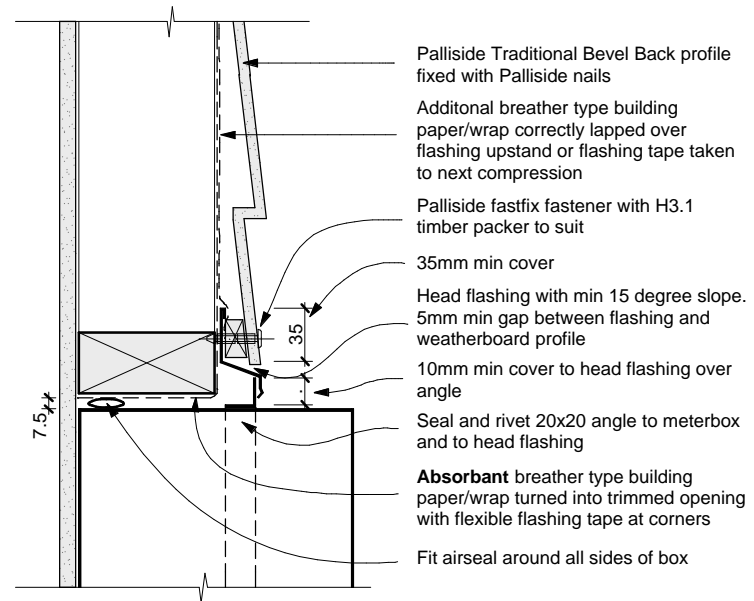


Fix angle and seal to all sides of box. At sides and base cladding shall overlap by 10mm. This detail is also suitable for other similar penetrations

DF13 Meterbox - Top
Palliside Rusticated profile



Fix angle and seal to all sides of box. At sides and base cladding shall overlap by 10mm. This detail is also suitable for other similar penetrations

DF13 Meterbox - Top
Palliside Traditional Bevel Back profile