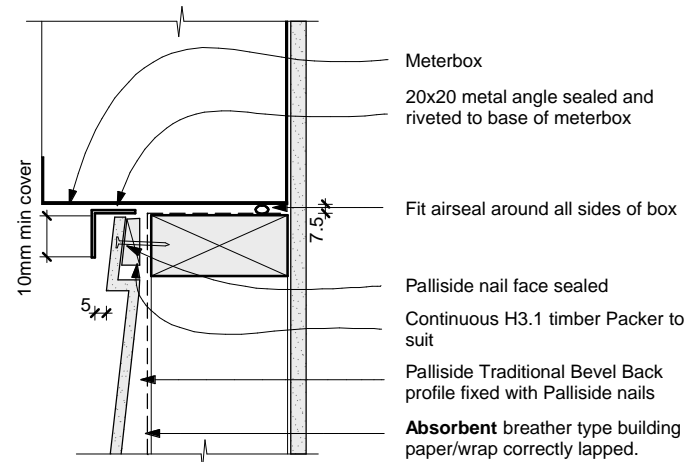


DF15 Meterbox - Base  
Palliside Rusticated profile

- Meterbox
- 20x20 metal angle sealed and riveted to base of meterbox
- Fit airseal around all sides of box
- Palliside nail face sealed
- Continuous H3.1 timber Packer to suit
- Palliside Rusticated weatherboard profile fixed with Palliside nails
- Absorbent** breather type building paper/wrap correctly lapped. Flexible flashing tape installed at corners and along sill



DF15 Meterbox - Base  
Palliside Traditional Bevel Back profile

- Meterbox
- 20x20 metal angle sealed and riveted to base of meterbox
- Fit airseal around all sides of box
- Palliside nail face sealed
- Continuous H3.1 timber Packer to suit
- Palliside Traditional Bevel Back profile fixed with Palliside nails
- Absorbent** breather type building paper/wrap correctly lapped. Flexible flashing tape installed at corners and along sill